

21
22

G **GIBSON**[®]
T Y R E T E C H



#START
WINNIN **G**



WE ARE GIBSON®

The GIBSON® TYRE TECH brand is strongly defined by our passion for off-road motorbike racing. Driven by this passion and the goal of developing and manufacturing high-performance off-road tyres, we founded the company in 2014. In the course of globalisation, GIBSON® has also built up a network of worldwide business partnerships. A team of developers with

many years of international success in tyre development is working with us on future innovations. Our worldwide production network manufactures products of the highest quality, which we then make available to all off-road fans. Like GIBSON® tyres, our globally patented GIBSON® mousse and GIBSON® tubes also impress customers with their absolute top quality.

Always being one step ahead and constantly improving existing products is what drives us every day. The close contact to our riders on the track and to our global sales partners helps us reach our goals. Their experience and expertise flow into the development and optimisation of all GIBSON® products.



WHAT DRIVES US

WE ARE PASSIONATE AND ENTHUSIASTIC

Our unconditional passion and enthusiasm for motocross and enduro racing unites all GIBSON® employees. We have a strong emotional connection to racing. Since our founding in 2014, our own employees have included internationally successful motocross and enduro competitors. In other words, we are part of the target group for which we develop and produce. We also maintain partnerships with well-known racing teams and top international drivers, whose experience is incorporated into the continuous ongoing development of GIBSON® products.

WE ARE YOUNG AND UNCONVENTIONAL

Our teams and our drivers are our friends. We share your love of off-road sports. We always look forward to the next race and we cannot wait to meet you in the paddock or at the track. We are part of the community.

AT TIMES, WE MIGHT BE A LITTLE OLD-FASHIONED

But when it comes to quality, being old-fashioned is no bad thing. We know that tyres and tyre mousse are important components of your bike. We spend a lot of money on development and testing. We do not skimp on materials and manufacturing processes. This is important, because this is the only way to truly promise you quality.

WE ARE RELIABLE

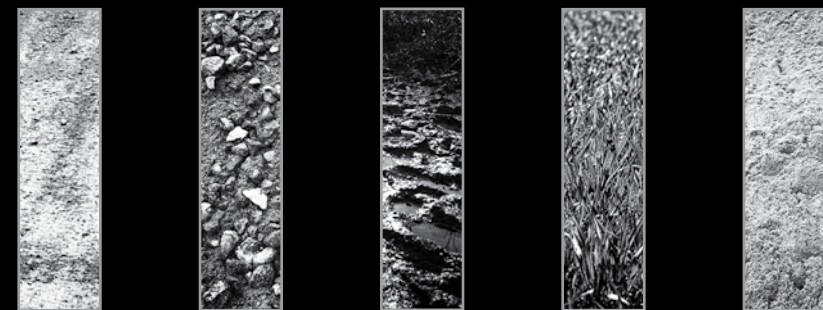
Since 2020, GIBSON® has been operating in the heart of Europe as a member of the Niemann + Frey Group, drawing on the experience of more than 80 years of sales and logistics of one of the largest specialist wholesalers in Europe. In Krefeld, all the threads of the global GIBSON® tapestry come together. Our worldwide network of importers is managed from here and is constantly being expanded.



GIBSON®

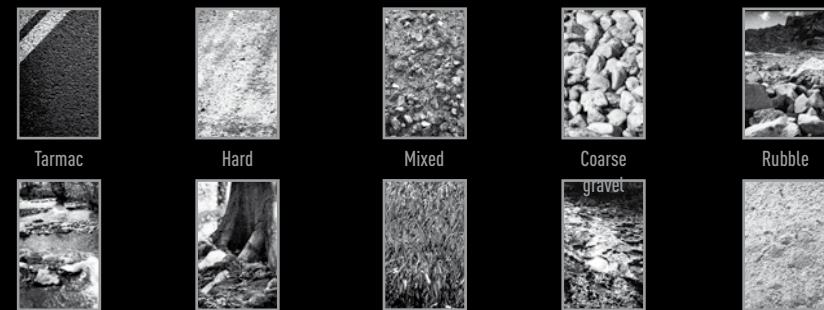
ALWAYS THE RIGHT TYRE FOR EVERY SURFACE

MOTOCROSS



Hard surfaces Mixed surfaces Mud Grass/fields Sand

ENDURO



Tarmac Hard Mixed Coarse gravel Rubble
Wet rock Forest floor Grass/fields Mud Sand

KMP HONDA RACING

GIBSON MOTOCROSS TEAM

The KMP Honda Racing Team is the official motocross racing team of Honda Germany. With a total of more than 50 riders, it is one of the largest racing teams in Europe. Five professionals from four nations compete in the European MXGP races for points in the World Championship, the European Championship and the international ADAC MX Masters Series. Three talented young riders from the team use their participation in the ADAC Youngster Cup to prepare for their future careers. Forty-five amateurs also compete in numerous regional races in this massively popular sport and rely entirely on Gibson products.



“We’ve been a partner to Gibson for several years, working as a pilot team for tyre tests and also using Gibson tyres for our racing team. We’re very proud and grateful to have Gibson as a partner and to be able to contribute to Gibson’s success story. We’re really satisfied with the quality and performance of the Gibson tyres.”



LEON HENTSCHEL

GIBSON ENDURO TEAM

Leon has been active in enduro since the end of 2016 and finished as runner-up in the Super Enduro World Championship in 2020. In the summer of 2020, he was a 'finisher' in what is probably the toughest hard enduro race in the world. Out of 1,800 starters, only 23 finished. As far as the future is concerned, the Super Enduro World Championship is coming up again as well as some hard enduro races like the Red Bull Hare Scramble, Hixpania Enduro and, of course, events that take place here in Germany.



Leon Hentschel: "Gibson has been one of my most dedicated supporters since the beginning of my enduro career. I really enjoy the collaboration and their development work on tyres and mousse is going very well. Our goal is to continuously expand the products and always adapt them to the extreme demands."

JEREMIAS RAMUS

JUNIOR CROSS RIDER FOR GIBSON

Jeremias Ramus from Blieskastel, born 13/12/2008, has been successfully active in motocross sport for years. At the start of 2021, Jeremias moved up to the 85 cc Husqvarna class and, of course, he rides on Gibson tyres in this class too. We are proud to support such a young and dedicated talent:

2017: 50 cc Südwestcup and Hessencup champion;
Saar-RLP runner-up
2019: 65 cc Südwestcup and Saar-RLP champion;
Hessencup runner-up;
5th place in the Supercross race in Holland
DM 65: 16th place out of 53 registered riders
11th place in the 65 cc Cross Finals



Jeremias Ramus: "I've put my trust in the Gibson brand for 5 years and I am very happy about the support and our successful collaboration. In line with my motto 'Never lose the grip with Gibson Tyre Tech', Gibson tyres give me the stability I need on my bike in the corners and on the straights, so I always have the optimum grip."

MOTOCROSS & JUNIOR CROSS PROGRAMME

#START
WINNING **G**



GIBSON® MX 1.1 FRONT THE ALL-ROUND TALENT THAT NEVER GOES OFF TRACK

Developed for the high demands of professional MX sport, Gibson's Crosslink technology, with its additional bracing between the outer lugs guarantees the highest possible stability, optimum lean angle and secure ground contact. Steering precision and directional stability after hard landings on soft as well as mixed surfaces characterise the GIBSON® MX 1.1 just as much as its excellent grip and outstanding durability.

Available in six different dimensions, the MX 1.1 is optimised for different track conditions and can be used on surfaces ranging from soft to medium-hard.

- Competition tyres – for the motocross professional and ambitious sports rider
- The narrow design is perfect for fast and narrow approaches
- Top stability, lateral control and directional stability even at extreme lean angles
- Recommended for all surface types, except hard surfaces
- Ultra-lightweight construction and soft carcass construction guarantee high elasticity
- High tread contact with the ground
- Also available in the relevant junior cross sizes

Available dimensions:

- 80/100 – 21" TT NHS
- 70/100 – 19" TT NHS
- 70/100 – 17" TT NHS
- 60/100 – 14" TT NHS
- 60/100 – 12" TT NHS
- 2.50 – 10" TT NHS

Perfect for these ground conditions:



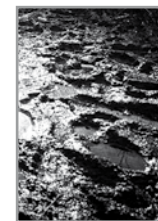
Mixed surfaces



Sand



Grass/fields



Mud

GIBSON® MX 2.1 FRONT/REAR

THE HARD SURFACE PROFESSIONAL



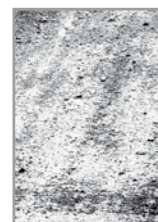
Specially developed for the extreme demands of hard surface tracks in professional MX sport. This generation of tyres featuring revolutionary Cross/Straightlink technology with additional bracing between the outer, shoulder & centre lugs guarantees enormous propulsion combined with maximum stability and optimum grip. Lug wear is eliminated even with the largest displacement class and maximum power during acceleration, which is demanded of the tyre on hard surfaces. The ultra-new GIBSON® MX 2.1 hard surface tyre does not suffer from punctures or flexing of the studs, even after hard landings and direct acceleration after a jump. The "Moto Boss" among hard ground tyres, available in all common sizes and in 16" for the 85 class. Also available as 18" for the toughest enduro, rally & sidecar use.

- Competition tyres – for MX Masters and World Championship pros
- The ultimate tyre for MX hard ground tracks
- The narrow design is perfect for fast and narrow ap proaches
- Top stability, propulsion and directional stability even at extreme lean angles
- Ultra-lightweight construction and carcass construction using polyester mesh
- Cross/Straightlink technology gives the MX 2.1 extreme durability
- Tightly staggered tread design ensures maximum ground contact

Available dimensions:

- 80/100 – 21" TT NHS
- 120/90 – 19" TT NHS
- 110/90 – 19" TT NHS
- 100/90 – 19" TT NHS
- 90/100 – 16" TT NHS
- 120/100 – 18" TT NHS

Perfect for these ground conditions:



Hard surfaces

GIBSON® MX 3.1 REAR

THE SOFT SURFACE PROFESSIONAL



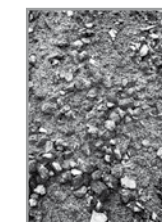
A rear tyre suitable for soft to medium-hard mixed surfaces. Thanks to its high lug profile and optimum alignment of the tread blocks, the GIBSON® MX 3.1 ensures maximum power transmission and reliable ground contact. The special rubber compound ensures exceptional durability and consistent stability over the entire service life of the tyre, while keeping down weight. Especially suitable for soft surfaces, mixed soils, grass/ fields and mud.

- Competition tyres – for the motocross professional and ambitious sports rider
- Narrow design also for smaller engine classes on wind ing, fast tracks
- Offset tread design, enormous grip and therefore maxi mum propulsion
- Recommended for all soft surfaces
- Ultra-lightweight construction and soft carcass con struction guarantee high elasticity
- High tread contact with the ground
- Also available in the relevant junior cross sizes

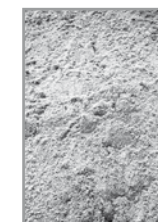
Available dimensions:

- 120/80 – 19" TT NHS
- 110/90 – 19" TT NHS
- 100/90 – 19" TT NHS
- 90/100 – 16" TT NHS
- 90/100 – 14" TT NHS 8
- 80/100 – 12" TT NHS

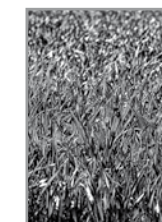
Perfect for these ground conditions:



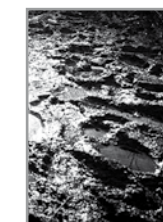
Mixed surfaces



Sand



Grass/fields



Mud



GIBSON® 4.1/4.2 REAR

THE MUD SPECIALIST

Rear tyre offering perfect value for money. The ultra-modern construction offers tremendous grip on medium to medium-hard surfaces. The outward-facing lugs, using the BOW TIE process, allow for maximum control at any lean angle. Crosslink technology with its additional bracing between the outer lugs, combined with a reinforced tyre shoulder, further improves lateral stability. The clever arrangement and dimensioning of the tread blocks of the GIBSON® MX 4.1 not only optimises the contact surface of the tyre, but also enables an exceptional self-cleaning effect. This makes the GIBSON® MX 4.1 the first choice for muddy ground.

- Competition tyres – for the motocross professional and ambitious sports rider
- The Crosslink technology of the outer lugs ensures maximum control and stability
- No buckling of the lugs and optimal self-cleaning
- Wide tread pattern, digs into soft surfaces like a shovel for maximum propulsion
- Particularly recommended for soft, muddy surfaces
- Ultra-lightweight construction and soft carcass construction guarantee high elasticity
- Maximum tyre footprint
- Also available in the relevant junior cross sizes

Available dimensions:

- 110/90 – 19" TT NHS 4.1
- 90/100 – 16" TT NHS 4.1
- 90/100 – 14" TT NHS 4.1
- 80/100 – 12" TT NHS 4.1
- 3.00 – 10" TT NHS 4.2
- 2.75 – 112" TT NHS 4.2

Perfect for these ground conditions:



Mixed surfaces



Sand



Grass/fields



Mud



GIBSON® MX 5.1 REAR

THE SAND SPECIALIST

This rear tyre was specially developed for use on soft, deep sandy surfaces. The centrally positioned special "sand blades" of the profile are complemented by laterally offset classic lug blocks. The result of this tread design: maximum grip, excellent propulsion and high directional stability even in a lean. Properties that are particularly important when accelerating out of corners on a harder surface covered with loose sand. The rubber compound used makes the special GIBSON® MX 5.1 sand tyre ultra-light, very flexible and ensures long durability in addition to optimum performance.

- Competition tyres – for the motocross professional and ambitious sports rider
- Perfect "blade design" of the lugs specially developed for sandy tracks
- The centre lugs and shoulder lugs lie in a radius, similar to a wide shovel
- Grips extremely well in deep sand, guarantees excellent propulsion and fast self-cleaning
- Wider outer lugs provide maximum stability in the lean and do not kink out of shape
- 18" size can also be used in enduro training and for sidecars
- Ultra-lightweight construction and soft carcass construction guarantee high elasticity
- Also available in the relevant junior cross sizes

Available dimensions:

- 110/90 – 19" TT NHS
- 100/90 – 19" TT NHS
- 90/100 – 16" TT NHS
- 90/100 – 14" TT NHS
- 80/100 – 12" TT NHS
- 3.00 – 10" TT NHS
- 110/100 – 18" TT NHS

Perfect for these ground conditions:



Sand



FACTORY PROGRAMME

GIBSON® FACTORY EDITION MX 1.1 MX 3.1 MX 4.1 FRONT/REAR THE MX MASTERMINDS



GIBSON® FACTORY-EDITION

The GIBSON® "Factory Tyre" was developed especially for professional competition use. All FACTORY tyres offer maximum heat tolerance and dynamic load resistance.

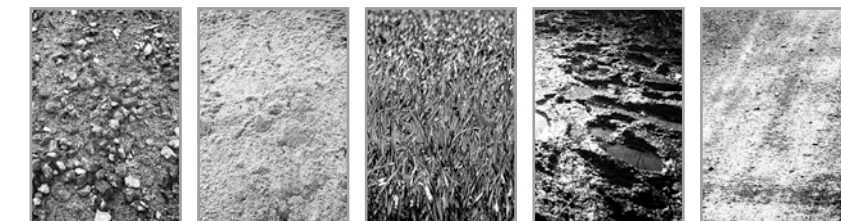
These outstanding competition tyres are specifically designed for professional racing use thanks to their special rubber compound and carcass construction featuring a special polyester mesh, as they offer maximum resilience with unbeatable control.

- Competition tyres – for MX Masters and World Championship pros
- Use by riders from the KMP Honda Deutschland Team and Leon Hentschel
- Special, harder rubber compound with an A-Shore hardness of 82
- Carcass mesh insert made of polyester
- Extremely durable and heat resistant
- Can be used on all surface conditions – even hard surfaces to a limited extent

Available dimensions:

- 80/100 – 21" TT NHS MX 1.1
- 100/90 – 19" TT NHS MX 4.1
- 110/90 – 19" TT NHS MX 4.1
- 120/80 – 19" TT NHS MX 3.1

Perfect for these ground conditions:



Mixed surfaces Sand Grass/fields Mud Hard surfaces



ENDURO PROGRAMME

GIBSON® TECH 8.1 FRONT FOR FAST ENDURO TRACKS & TESTS

In terms of cross-section, this front tyre is the flat version of the three in the GIBSON Enduro front tyre family.

It combines extreme directional stability with exceptional durability. The GIBSON® TECH 8.1 is optimised for different surfaces and can be used on all kinds of terrains from "soft" to "hard".

This means that it can be driven on both light and heavy

surfaces and still manages to deliver unbelievable steering precision.

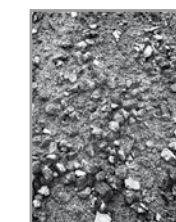
The dimensions of the GIBSON® TECH 8.1 comply with FIM regulations and it has ECE-R75 and DOT approvals. This tyre has also proven itself in numerous runs on hard surfaces in motocross.

- Competition tyres – for professional riders and ambitious amateurs
- The flatter design is perfect for fast, special tests
- Recommended for tight turns on grass and soft ground
- Robust and durable compound with excellent allround profile
- Very good grip with long service life
- Reliable over long distances
- Street legal and FIM approved
- Meets the requirements of ECE-R75 and DOT certification

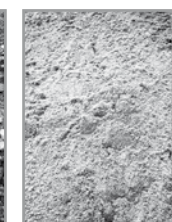
Available dimensions:

- 90/90-21

Perfect for these ground conditions:



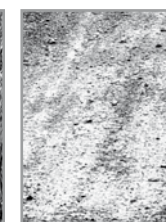
Mixed surfaces



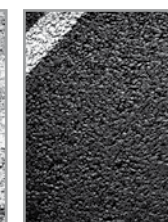
Sand



Grass/fields



Hard surfaces



Tarmac

GIBSON® 9.1 FRONT SOFT OR STANDARD

This front tyre is primarily designed for technical enduro disciplines subject to FIM regulations, for cross-country and extreme enduro use. Needless to say, it also meets the specifications for ECE-R75 and

DOT approval. The GIBSON® TECH 9.1 is the perfect all-rounder. It combines maximum directional stability with exceptional stability. The specially developed rubber compound is tear-re-

sistant and extremely resilient even under the most severe loads. High grip level and a wide contact surface round off the excellent characteristics of this super sport star.

GIBSON® 9.1 SOFT FOR EXTREME ENDURO

- Competition tyres – for professional competition riders
- High directional stability even in deep ruts
- Very good contact surface due to soft rubber compound
- This means that the tyre adapts very well to all irregularities
- Street legal and FIM approved
- Meets the requirements of ECE-R75 and DOT certification

GIBSON® 9.1 STANDARD FOR COMPETITIONS AND DAILY USE

- Versatile tyres – for the ambitious sport rider
- High directional stability even in deep ruts
- Greater durability thanks to a harder rubber compound than the TECH 9.1 Soft
- Street legal and FIM approved
- Meets the requirements of ECE-R75 and DOT certification

Available dimensions:

- 90/100-21"

Perfect for these ground conditions:



Forest floor

Mud

Rubble

Wet rock

Tarmac

GIBSON® TECH 9.2 „FATTY“ FRONT FOR EXTREME ENDURO

The GIBSON® TECH 9.2 front tyre was designed to deliver on even the most difficult technical off-road passes in Hard & Extreme Enduro sport. It likes it to be EXTREME; it pushes the limits of what is possible. The 9.2 complies with FIM regulations as well as ECE-R75 road approval.

The distinctive V-shaped tread design, supported by a new carcass construction and innovative rubber compound, makes the GIBSON® TECH 9.2 a winner on even the most difficult terrain.

The width of the contact surface plays just as important a role as the light weight of just 4.5 kg.

This “chunky one” rolls over loose and soft terrain with ease and offers optimal guidance. It masters

technical obstacles such as rocks, roots or trees with flying colours. Its enlarged footprint ensures that it meshes perfectly with the ground, no matter how tricky it may be.

The engineers also paid a lot of attention to wet grip. The sharp tread edges with the increased block height guide the front wheel almost like on rails, whether wet, whether dry, whether cross-country or extreme enduro – if you try to push the GIBSON® TECH 9.2 to its limits, these limits will simply shift.

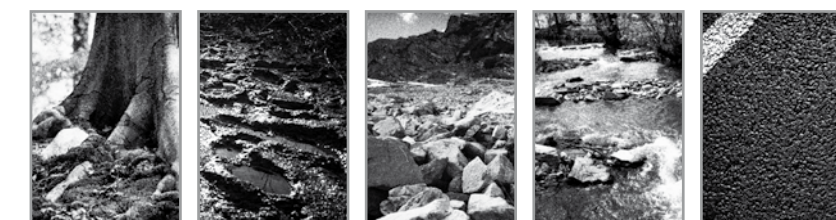
GIBSON® TECH 9.2 – peerless for extreme enduro.

- The ultimate front tyre - for professional competition riders
- Developed from the successful Tech 9.1 model
- The angular profile of the shoulder lugs guarantees extreme directional stability
- The lugs literally dig into the ground and give the f front wheel stability
- This is enormously important in tight leans and helps prevent sideways slippage
- Extremely high directional stability even in deep ruts and on firm surfaces
- Also for difficult events with deep, muddy and soft surfaces
- Street legal and FIM approved
- Meets the requirements of ECE-R75 and DOT certification

Available dimensions:

- 90/100-21"

Perfect for these ground conditions:



Forest floor

Mud

Rubble

Wet rock

Tarmac

GIBSON® 6.2 REAR

SOFT OR STANDARD

The TECH 6.2 is an enduro rear tyre that can be used for all FIM & official enduro competitions on dry and soft surfaces. In combination with the GIBSON Mousse "soft" it develops the perfect contact surface with its 140 mm width, irreplaceable for difficult passages and

steep slopes, to ensure you master every lap. Standard version is the perfect everyday tyre and enduro all-rounder. All versions of the GIBSON® TYRE TECH 6.2 enduro tyres comply with FIM regulations and are characterised by

low weight and excellent grip even during extended use.

GIBSON® 6.2 SOFT

FOR EXTREME ENDURO

- Competition tyres – for professional enduro riders
- Perfect for stony, very hard and uneven surfaces
- Very large contact surface due to soft rubber compound
- This means that the tyre adapts very well to all irregularities
- Street legal and FIM approved
- Meets the requirements of ECE-R75 and DOT certification

GIBSON® 6.2 STANDARD

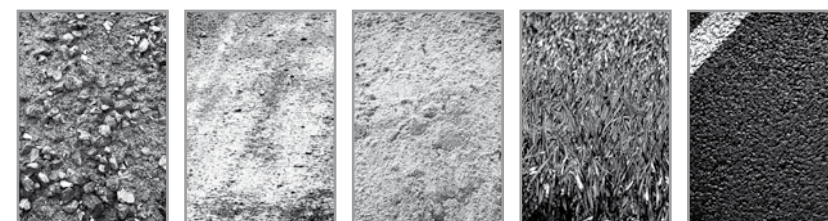
FOR COMPETITIONS AND DAILY USE

- Versatile tyres – for ambitious amateur riders
- Very good traction even on steep ascents
- Long durability thanks to a harder rubber compound than the TECH 6.2
- Ideal for alternating off-road & on-road operation
- Street legal and FIM approved
- Meets the requirements of ECE-R75 and DOT certification

Available dimensions:

- 140/80-18"

Perfect for these ground conditions:



Mixed surfaces

Hard surfaces

Sand

Grass/fields

Tarmac

GIBSON® 7.1 REAR

SOFT OR STANDARD

This ultra-modern rear tyre can be used in all training sessions and competitions that are not organised in accordance with FIM regulations. It boasts the very best features, an uncompromising tread design with high lugs and an optimal arrangement of the tread blocks, to deliver the best possible tyre contact surface. In addition, the greater tread depth ensures tremendous grip in deep soil and very good self-cleaning. The GIBSON® 7.1 SOFT variants were developed for sports use on various surfaces. Both versions also offer an uncompromising tread with high lugs in different degrees of hardness. The grip level of the rubber compound is extremely high and delivers excellent propulsion on all surfaces. The all-rounder with ECE-R75 and DOT approval.

GIBSON® 7.1 SOFT

FOR HIGH-SPEED ENDURO

- Competition tyres – for professional competition riders
- Perfect for softer, deep surfaces, special tests on grass and fields
- Narrow design also for smaller engine classes on winding, fast tracks
- Very high contact surface due to soft rubber compound
- This means that the tyre adapts very well to all irregularities
- higher lugs than TECH 6.2, therefore not approved by the FIM
- Meets the requirements of ECE-R75 and DOT certification

GIBSON® 7.1 STANDARD

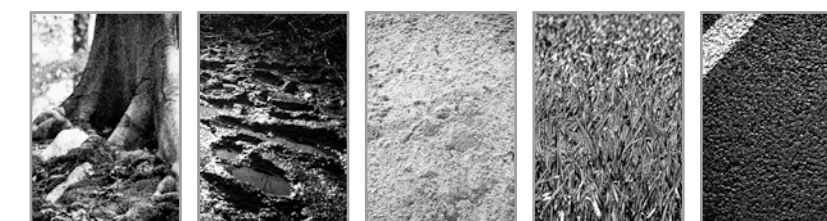
FOR COMPETITIONS AND DAILY USE

- Versatile tyres – for the ambitious sport rider
- Excellent traction on deep soft, sandy and muddy surfaces
- Narrow design also for smaller engine classes on winding, fast tracks
- Long durability thanks to a harder rubber compound than the 7.1 Soft
- Ideal for alternating off-road & on-road operation
- Higher lugs than TECH 6.2, therefore not approved by the FIM
- Meets the requirements of ECE-R75 and DOT certification

Available dimensions:

- 110/100-18"

Perfect for these ground conditions:



Forest floor

Mud

Sand

Grass/fields

Tarmac

MOUSSE PROGRAMME



GIBSON® MOUSSE THE HIDDEN CHAMPION

The patented GIBSON® MOUSSE completely revolutionises the existing mousse technology! Patented ring-shaped grooves offer two significant improvements over conventional technology in tough racing conditions: The grooves absorb additional volume of mousse gel during assembly, which leads to more effective distri-

bution of the gel and thus better dissipation of the heat generated. This increases the service life and thus also the operating times of the mousse. The patented grooves increase the tyre contact area. The result: improved traction, maximum grip and extreme steering precision significantly enhance driving performance.

- Protected by worldwide patent
- For all application areas
- Developed especially for the extreme demands of enduro
- Specially designed grooves mean that the Gibson mousse lasts longer than those of competitors

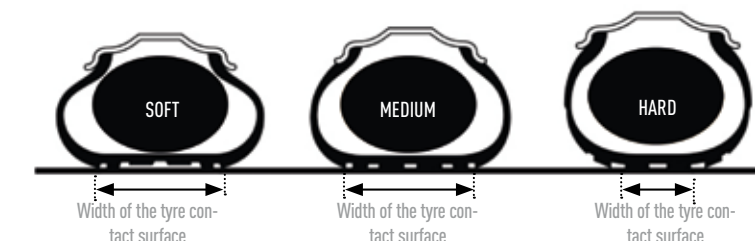
GIBSON® MOUSSE – WHICH MOUSSE FOR WHICH APPLICATION

ENDURO

- The rule of thumb for enduro: The harder the course, the softer the mousse!
- If the track is stony, full of roots and wet: GIBSON® Mousse "Soft"
- If the track is soft to medium-hard: GIBSON® Mousse "Medium Hard"
- If the track is like a rally course, i.e. very fast: GIBSON® Mousse "Hard"

MOTOCROSS

- In motocross, it's pretty much the other way round: a "soft" mousse is not used here at all!
- If the track consists primarily of hard, clayey soil: GIBSON® Mousse "Hard"
- If the track is soft to medium-hard: GIBSON® Mousse "Medium Hard"



GIBSON® MOUSSE

THE HIDDEN CHAMPION

GIBSON® MOUSSE IS AVAILABLE IN THE FOLLOWING SIZES AND AIR PRESSURE SIMULATIONS:

	Rim size	Tyre size	Air pressure, sim.
CROSS / ENDURO			
GIBSON® Mousse, rear wheel / medium-hard	19" / 18"	110/90; 120/90; 120/80	0.8
GIBSON® Mousse, rear wheel / soft	19" / 18"	110/90; 120/90; 120/80	0.6
GIBSON® Mousse, rear wheel / medium-hard	19"	100/90	0.8
GIBSON® Mousse, front wheel / medium	21"	80/100; 90/90	0.8
GIBSON® Mousse, front wheel / soft	21"	80/100; 90/90	0.6
GIBSON® Mousse, front wheel / medium-hard	21"	80/100; 90/90	0.9
JUNIOR CROSS			
GIBSON® Mousse, rear wheel / medium-hard	12"	80/100	0.8
GIBSON® Mousse, front wheel / medium-hard	14"	60/100	0.8
GIBSON® Mousse, rear wheel / medium-hard	16"	90/100	0.8
GIBSON® Mousse, front wheel / medium-hard	19"	70/100	0.8
ENDURO			
GIBSON® Mousse, rear wheel / medium	18"	140/80	0.8
GIBSON® Mousse, rear wheel / soft	18"	140/80	0.6
GIBSON® Mousse, rear wheel / hard	18"	140/80	1.2
GIBSON® Mousse, front wheel / soft	21"	90/100	0.6
GIBSON® Mousse, front wheel / medium	21"	90/100	0.8
Silicone gel for mounting the GIBSON® Mousse	N/A	80 gr. Tube	N/A
Silicone gel for mounting the GIBSON® Mousse	N/A	1 kg container	N/A



GIBSON® MOUSSE

THE HIDDEN CHAMPION

WHY GIBSON® MOUSSE?

Why is using GIBSON® Mousse preferable to using an inner tube?

The use of mousse in the tyre guarantees an absolutely puncture-proof ride. Flat tyres, leaks, torn valves and much more are now a thing of the past.

What makes the GIBSON® mousse so special and sets it apart from mousse products from other manufacturers?

Every mousse has a limited shelf life, as the sponge rubber is subject to a natural shrinkage process. For this reason, GIBSON® Mousse is only ever produced in such quantities that the customer can be guaranteed

the maximum storage & useful life. In addition, each GIBSON® mousse is supplied in a carton, shrink-wrapped in plastic. This ensures maximum protection against degassing, solar radiation and dirt, which leads to an additional increase in life expectancy.


Since the mousse is inserted into the tyre instead of a conventional tube and is completely different in terms of fitting, it is essential to pre-treat this product with the GIBSON® fitting lube specially designed for this purpose. The use of talcum powder or similar products, which are usually used when fitting an inner tube, must be avoided in any case. We strongly recommend the

use of the special GIBSON® Mousse fitting lube. The GIBSON® mousse is the only mousse to have the grooves described above, which absorb enough of this vital gel and thus reduce heating, which is dangerous for the mousse, during riding by up to 10°C compared to competitor products.

HOW LONG DOES A GIBSON® MOUSSE LAST?

The service life of the GIBSON® Mousse is comparable to the durability of a tyre. Depending on the intensity of the load and the duration of use, the tyre and also the mousse will wear out accordingly. For example, high speeds in very warm outdoor temperatures can put a more significant strain on the mousse.

A soft mousse has a shorter lifespan than a hard mousse. To protect the mousse, the wheels should be unloaded, so it is best to generally park the entire motorbike on a stand when it is not in use.





TUBE PROGRAMME

GIBSON® TECH TUBES

COMPETITION TUBES – FOR THE PROFESSIONAL AND ALSO FOR EVERYDAY USE



There are still many riders in both the private and professional sectors who prefer to use a tube rather than a mousse. One of the reasons for this is that the pressure ratios of the tyre can be individually adjusted to the track level, depending on the surface. This makes it much more flexible than using a mousse. However, there is always a risk of getting a flat when using a tube, even despite the high tyre wall thickness.

- GIBSON® TECH tubes are made exclusively for the Gibson brand in Europe
- The tubes are offered in the sizes commonly used in off-road sports
- The tubes are available in different wall thicknesses
- die GIBSON® TECH tubes are extremely durable and offer exceptional longevity
- With a wall thickness of 4 mm, this tube is not even bothered by hitting a kerb at high speeds

GIBSON® TUBES ARE AVAILABLE IN THE FOLLOWING SIZES:

Enduro / motocross tubes	Rim size	Tyre size
Junior Cross tube / valve 34G / 2.5–3.00 mm	10"	2.50 / 2.75 / 3.00
Enduro & Cross tube / valve 34G / 2.5–3.00 mm	18"	100/100; 110/100; 120/100; 120/90; 130/90; 130/80; 140/80; 150/70
Cross tube / valve 34G / 2.5–3.00 mm	19"	90/100; 100/90
Cross tube / valve 34G / 2.5–3.00 mm	19"	110/90; 120/90; 110/80; 120/80; 130/70
Enduro tube / valve 34G / 4.00–4.50 mm	18"	100/100; 110/100; 120/100; 120/90; 130/90; 130/80; 140/80
Cross tube / valve 34G / 4.00–4.50 mm	19"	110/90; 120/90; 110/80; 120/80; 130/70
Enduro & Cross tube / valve 34G / 4.00–4.50 mm	21"	80/100; 90/100; 90/90

GIBSON® TYRE TECH

PRODUCT OVERVIEW

MOTOCROSS TYRES

Item number	Category	Specification/size
MX 1.1 ALL SURFACES		
109.2032254	Junior Cross front tyre	2.50-10 33 M TT NHS
109.2032247	Junior Cross front tyre	60/100-12 36 M TT NHS
109.2032230	Junior Cross front tyre	60/100-14 29 M TT NHS
109.2032223	Junior Cross front tyre	70/100-17 40 M TT NHS
109.2032216	Junior Cross front tyre	70/100-19 42 M TT NHS
109.1032209	Front tyre	80/100-21 51 R TT NHS
109.6010021	“Factory edition” front tyre	80/100-21 TT NHS
MX 2.1 HARD SURFACES		
109.2034432	Front tyre	80/100-21 TT 51 R
109.2034449	Rear tyre	120/90-19 TT NHS
109.2034456	Rear tyre	110/90-19 TT NHS
109.2034463	Rear tyre	100/90-19 TT NHS
109.2034470	Rear tyre	120/100-18 TT 68M
109.2034487	Junior Cross rear tyre	90/100-16 TT NHS
MX 3.1 SOFT TO MEDIUM GROUND		
109.2032315	Junior Cross rear tyre	80/100-12 50 M TT NHS
109.2032308	Junior Cross rear tyre	90/100-14 49 M TT NHS
109.2032292	Junior Cross rear tyre	90/100-16 51 M TT NHS
109.1032285	Rear tyre	100/90-19 57 M TT NHS
109.6033503	“Factory edition” rear tyre	120/80-19 TT NHS
109.1032261	Rear tyre	

Item number	Category	Specification/size
MX 4.1 SOFT TO MUDDY GROUND		
109.2032391	Junior Cross rear tyre	2.75-10 33 M TT NHS
109.2032360	Junior Cross rear tyre	80/100-12 50 M TT NHS
109.2032353	Junior Cross rear tyre	90/100-14 49 M TT NHS
109.2032346	Junior Cross rear tyre	90/100-16 21 M TT NHS
109.6010219	“Factory edition” rear tyre	100/90-19 TT NHS
109.6010119	“Factory edition” rear tyre	110/90-19 TT NHS
109.1032322	Rear tyre	110/90-19 62 M TT NHS
MX 4.2 SOFT TO MUDDY GROUND		
109.2032568	Junior Cross rear tyre	3.00-10 33 M TT NHS
109.2032377	Junior Cross rear tyre	2.75-12 20 M TT NHS
MX 5.1 SANDY GROUND		
109.2032452	Junior Cross rear tyre	3.00-10 TT NHS
109.2032445	Junior Cross rear tyre	80/100-12 TT NHS
109.2032438	Junior Cross rear tyre	90/100-14 TT NHS
109.2032421	Junior Cross rear tyre	90/100-16 TT NHS
109.3030380	Rear tyre	110/100-18 64 M TT NHS
109.1032414	Rear tyre	100/90-19 TT NHS
109.1032407	Rear tyre	110/90-19 TT NHS

ENDURO TYRES

Item number	Category	Specification/size
TECH 6.2 F.I.M. / EC		
109.3033350	Rear tyre	140/80-18 70 M TT ECE 75
109.3033459	“Soft” rear tyre	140/80-18 70 M TT ECE 75
TECH 7.1 EC		
109.3030274	Rear tyre	110/100-18 64 M TT ECE 75
109.3032698	“Soft” rear tyre	110/100-18 64 M TT ECE 75
TECH 8.1 F.I.M.		
109.3030281	Front tyre	90/90-21 54 M TT ECE 75
TECH 9.1 F.I.M.		
109.3030298	Front tyre	90/100-21 57 M TT ECE 75
109.3033435	“Soft” front tyre	90/100-21 57 M TT ECE 75
TECH 9.2 F.I.M.		
109.3034128	Front tyre	90/100-21 TT 57M ECE 75

MOTOCROSS AND ENDURO TUBES

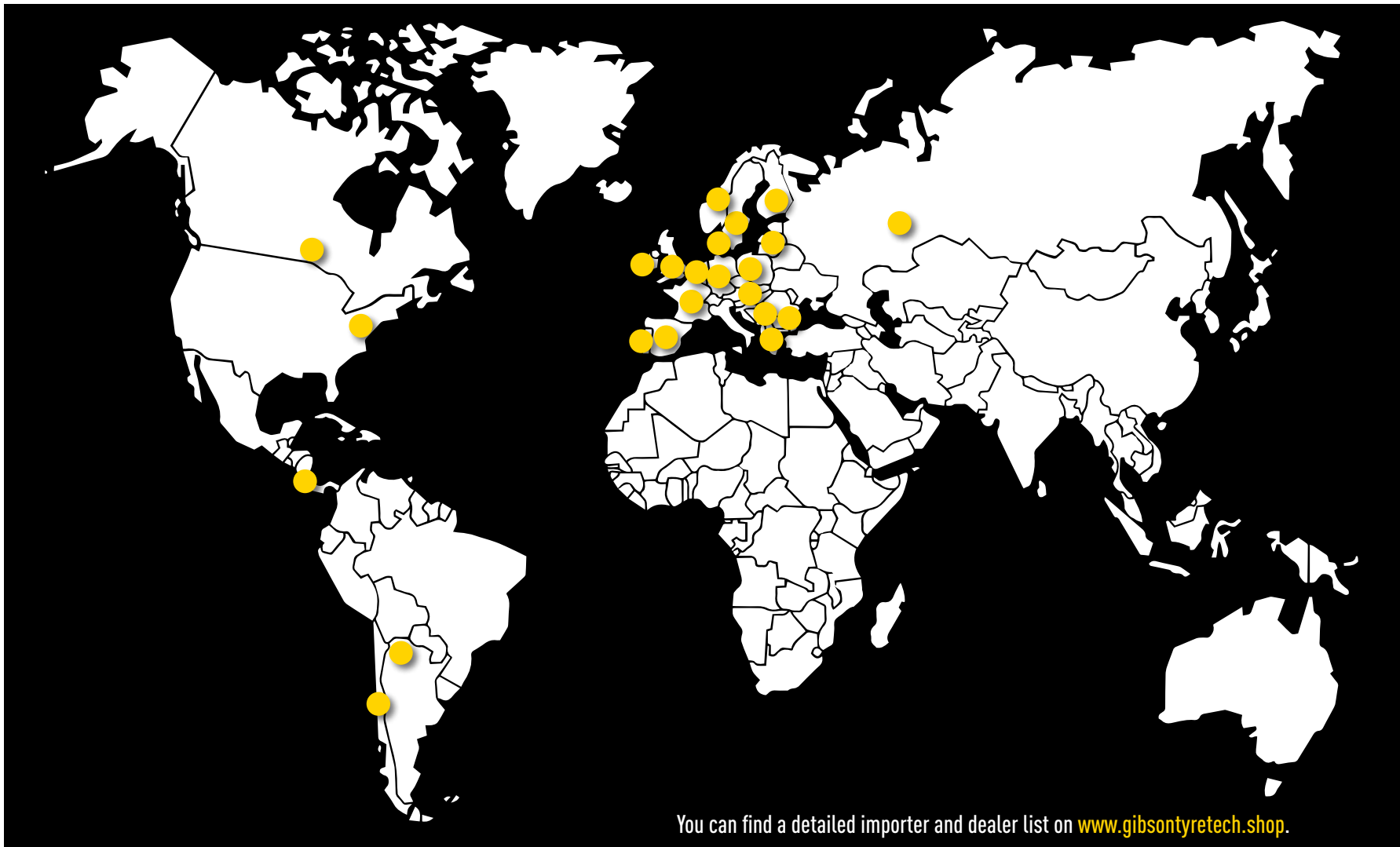
Item number	Category	Specification/size
109.5034296	Tube 10C 2.5–3.00 mm	10” - 2.50/2.75/3.00
109.5034203	Tube 18F 2.5–3.00 mm	8” - 100/100,110/100, 120/100,120/90, 130/90, 130/80,140/80,150/70
109.5034234	Tube 19D 2.5–3.00 mm	19” - 90/100,100/90
109.5034241	Tube 19E 2.5–3.00 mm	19” - 110/90,120/90,110/80, 120/80, 130/70
109.5034258	Tube 19E 4.0–4.50 mm	19” - 110/90,120/90, 110/80,120/80, 130/70
109.5034272	Tube 21D 4.0–4.50 mm	21” - 80/100,90/100,90/90
109.5034210	Tube 18F 4.0–4.50 mm	18” - 100/100,110/100, 120/100,120/90, 130/90, 130/80,140/80

MOUSSE

Item number	Category	Specification/size
MOTOCROSS / ENDURO		
109.9032599	Mousse, rear / medium-hard / 0.8 bar	19”/18” - 110/90; 120/90; 120/80
109.9033602	Mousse, rear / soft / 0.6 bar	19”/18” - 110/90; 120/90; 120/80
109.9032582	Mousse, rear / medium-hard / 0.8 bar	19” - 100/90
109.9032650	Mousse, front / medium / 0.8 bar	21” - 80/100; 90/90
109.9033442	Mousse, front / soft / 0.6 bar	21” - 80/100; 90/90
109.9033749	Mousse, front / medium-hard / 0.9 bar	21” - 80/100; 90/90
JUNIOR CROSS		
109.9033374	Mousse, rear / medium-hard / 0.8 bar	12” - 80/100
109.9033367	Mousse, front / medium-hard / 0.8 bar	14” - 60/100
109.9032643	Mousse, rear / medium-hard / 0.8 bar	16” - 90/100
109.9032636	Mousse, front / medium-hard / 0.8 bar	19” - 70/100
ENDURO		
109.9032612	Mousse, rear / medium / 0.8 bar	18” - 140/80
109.9033619	Mousse, rear / soft / 0.6 bar	18” - 140/80
109.9033626	Mousse, rear / hard / 1.2 bar	18” - 140/80
109.9033763	Mousse, front / soft / 0.6 bar	21” - 90/100
109.9033756	Mousse, front / medium / 0.8 bar	21” - 90/100
109.9031622	Silicon Fitting Lube for Gibson Mousse	1 kg container
109.9034135	Silicon Fitting Lube for Gibson Mousse	80 g tube

GIBSON WORLDWIDE

EUROPE - USA - CANADA - SOUTH AMERICA

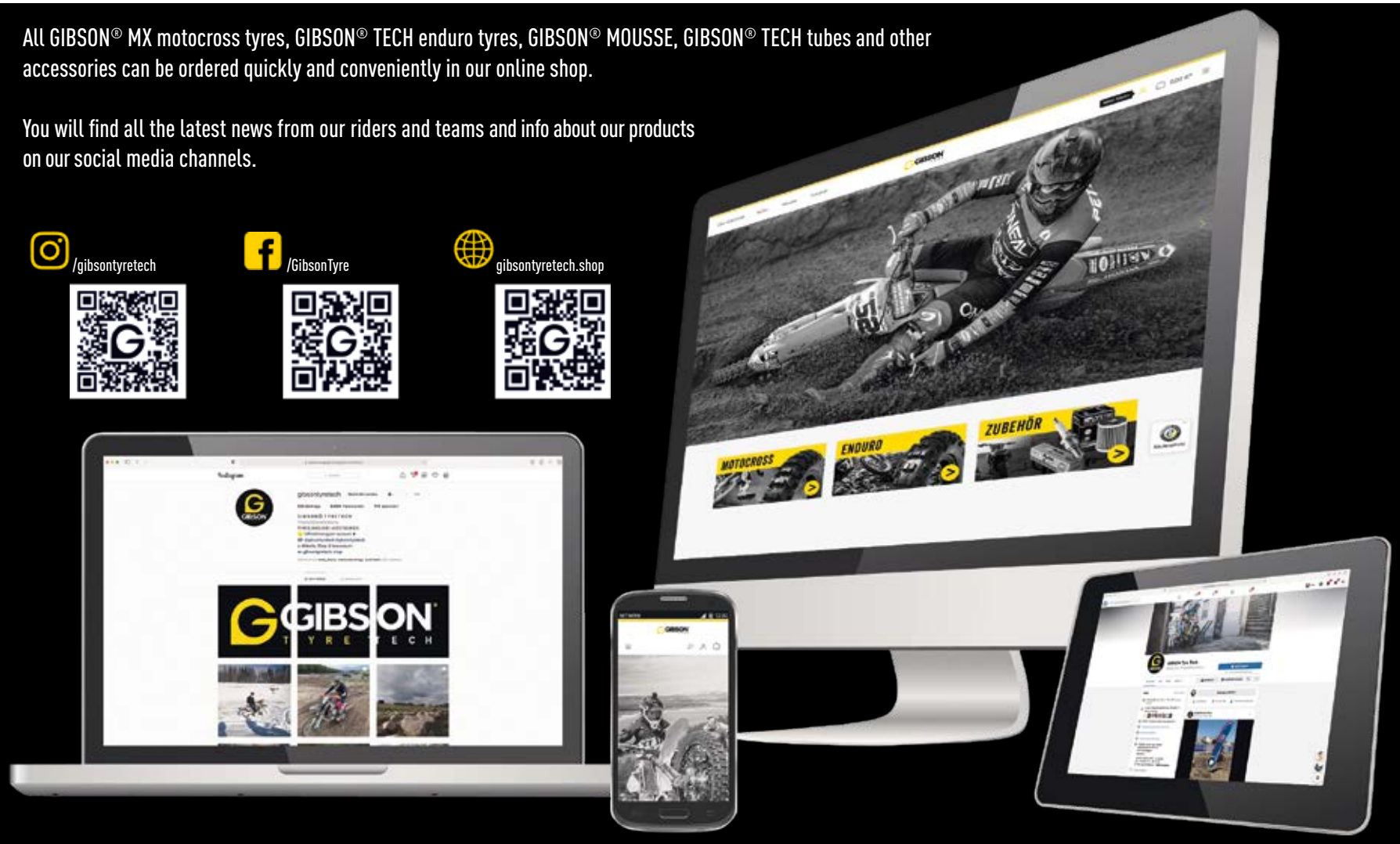


FOLLOW TO LEAD

GIBSON ONLINE

All GIBSON® MX motocross tyres, GIBSON® TECH enduro tyres, GIBSON® MOUSSE, GIBSON® TECH tubes and other accessories can be ordered quickly and conveniently in our online shop.

You will find all the latest news from our riders and teams and info about our products on our social media channels.





GIBSON® TYRE TECH

A Niemann+Frey GmbH brand

Adolf-Dembach-Str. 24

D-47829 Krefeld

www.gibsontyretech.com